

PLEASE CHECK WWW.MOLEX.COM FOR LATEST PART INFORMATION

Part Number: [0495670001](#)
Status: **Active**
Description: .187 (.007") Pitch Faston Housing, 1 Circuit

Documents:

[Drawing \(PDF\)](#) [RoHS Certificate of Compliance \(PDF\)](#)
[Product Specification PS-49567-0001 \(PDF\)](#)

General

Product Family Crimp Housings
 Series [49567](#)
 Product Name N/A

Physical

Circuits (maximum) 1
 Color - Resin Natural
 Gender Female
 Glow-Wire Compliant No
 Keying to Mating Part None
 Lock to Mating Part None
 Material - Resin Polyester Alloy
 Number of Rows 1
 Packaging Type Bag
 Panel Mount No
 Pitch - Mating Interface (in) 0.000 In
 Pitch - Mating Interface (mm) 0.00 mm
 Polarized to Mating Part Yes
 Ports 1
 Stackable Yes
 Temperature Range - Operating -40°C to +105°C

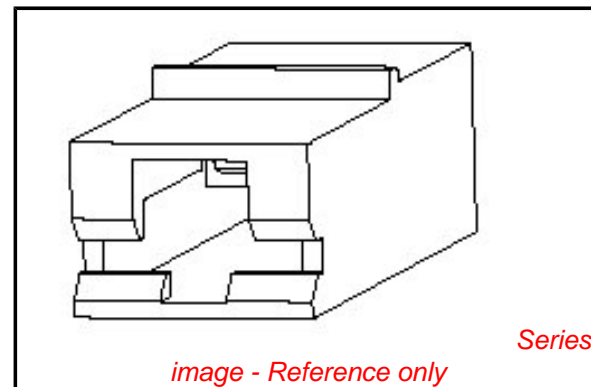
Electrical

Current - Maximum per Contact 20A

Material Info

Reference - Drawing Numbers

Product Specification PS-49567-0001
 Sales Drawing SD-49567-0001



EU RoHS

**ELV and RoHS
 Compliant**
REACH SVHC
 Not Reviewed
**Halogen-Free
 Status**
Not Reviewed

China RoHS

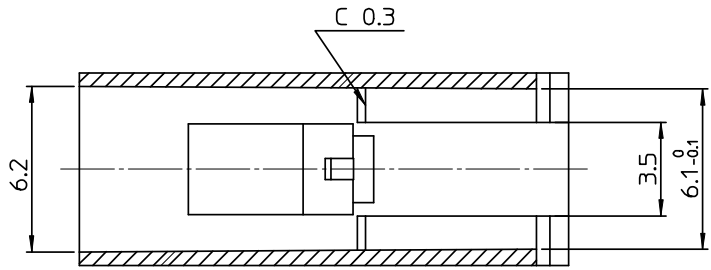


**Need more information on product
 environmental compliance?**

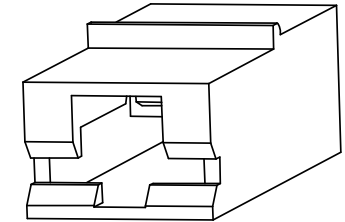
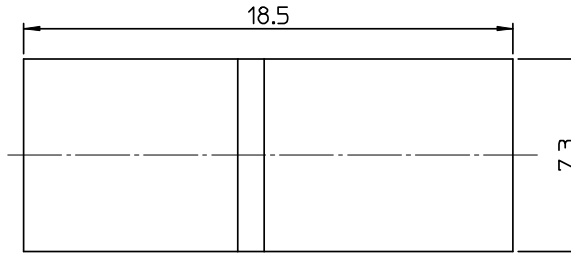
Email productcompliance@molex.com
 For a multiple part number RoHS Certificate of
 Compliance, [click here](#)

Please visit the [Contact Us](#) section for any
 non-product compliance questions.

Search Parts in this Series
[49567Series](#)

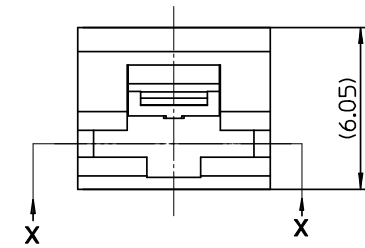
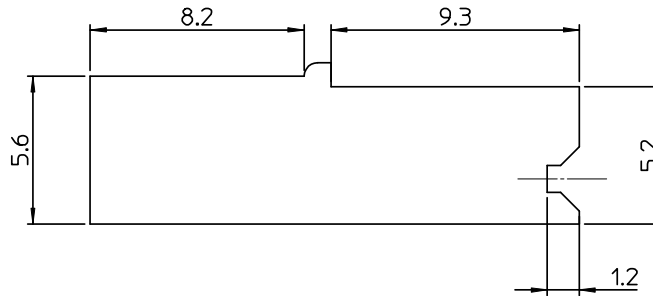
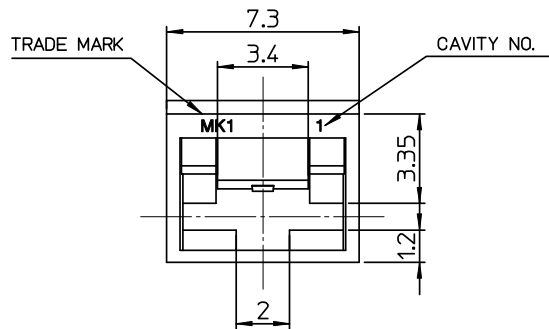


SECTION X-X



NOTES.

1. MATERIAL : PBT/PC, NATURAL COLOR
2. PERMISSIBLE FLASH : 0.2mm MAX



ENTER DESCRIPTION EC NO: KOR2008-0100 DRWN: JHPARK01 2007/12/11 CHKD: WY YANG 2007/12/14 APPR: YUNSIKKIM 2007/12/14	REVISION A	QUALITY SYMBOLS 	GENERAL TOLERANCES (UNLESS SPECIFIED)		DIMENSION STYLE MM ONLY		SCALE 5:1	DESIGN UNITS METRIC	THIRD ANGLE PROJECTION				
					DRAWN BY JH.PARK	DATE 2007/12/10	TITLE 187 FASTON HOUSING 1P						
					4 PLACES ± --- ± ---	CHECKED BY WY YANG	DATE 2007/12/10	MOLEX INCORPORATED					
					3 PLACES ± --- ± ---	APPROVED BY EH. JUNG	DATE 2007/12/10	MATERIAL NO. ENTER PART		DOCUMENT NO. SD-49567-0001			SHEET NO. 1 OF 00
		2 PLACES ± 0.15 ± ---	DRAFT WHERE APPLICABLE MUST REMAIN WITHIN DIMENSIONS		SIZE A3		THIS DRAWING CONTAINS INFORMATION THAT IS PROPRIETARY TO MOLEX INCORPORATED AND SHOULD NOT BE USED WITHOUT WRITTEN PERMISSION						
		1 PLACE ± 0.1 ± ---											
		ANGULAR ± 1 °											